

## VPN-1 Edge Appliances

### Secure connectivity for remote sites and large-scale VPN deployments

#### BENEFITS

- Secures site-to-site/remote access communications and network resources
- Integrates with centralized, large-scale management and logging
- Allows you to protect and connect sites in minutes with easy set-up
- Enables always-on protection and connectivity

#### YOUR CHALLENGE

In today's cost-conscious environment, companies are increasingly turning to virtual private networks (VPNs) to connect remote offices to applications, information and other corporate resources. You need to efficiently deploy and manage hundreds or thousands of VPN gateways ó even though your remote offices and retail sites often do not have dedicated security staff. You need cost-effective, reliable VPN gateways that integrate into your security infrastructure and protect against increasingly sophisticated Internet-based attacks.

#### OUR SOLUTION

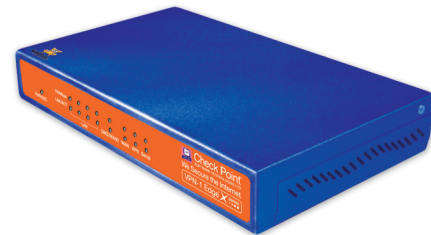
Check Point VPN-1<sup>®</sup> Edge<sup>™</sup> provides secure connectivity for remote sites, branch offices and partner sites by integrating market-leading VPN-1/FireWall-1<sup>®</sup> technology, high availability support and networking features on a cost-effective appliance. Ideal for large-scale VPN deployments, VPN-1 Edge is managed by Check Point's centralized management, for quick setup and management of thousands of Check Point gateways. VPN-1 Edge starts at \$399 per site, enabling you to replace expensive frame relay and private line connections with secure, fast and reliable, broadband-based VPN connectivity.

#### UNMATCHED PROTECTION

Tailored to the needs of corporate remote sites, VPN-1 Edge safeguards corporate resources and ensures the privacy and integrity of data communications, by integrating access control, user authentication and encryption into one easy-to-use device.

#### Patented Stateful Inspection Firewall

VPN-1 Edge includes Check Point-patented Stateful Inspection technology, providing the most secure Internet protection in the industry. Only Check Point Stateful Inspection can track the state and context of all network communications, to provide truly complete network protection.



VPN-1 Edge provides secure connectivity for remote sites and large-scale deployments.

#### Broad Application Support

VPN-1 Edge supports over 150 pre-defined applications, services and protocols out of the box, including instant messaging and peer-to-peer applications, database applications and H.323-based services like Voice over IP (VoIP) and Microsoft NetMeeting.

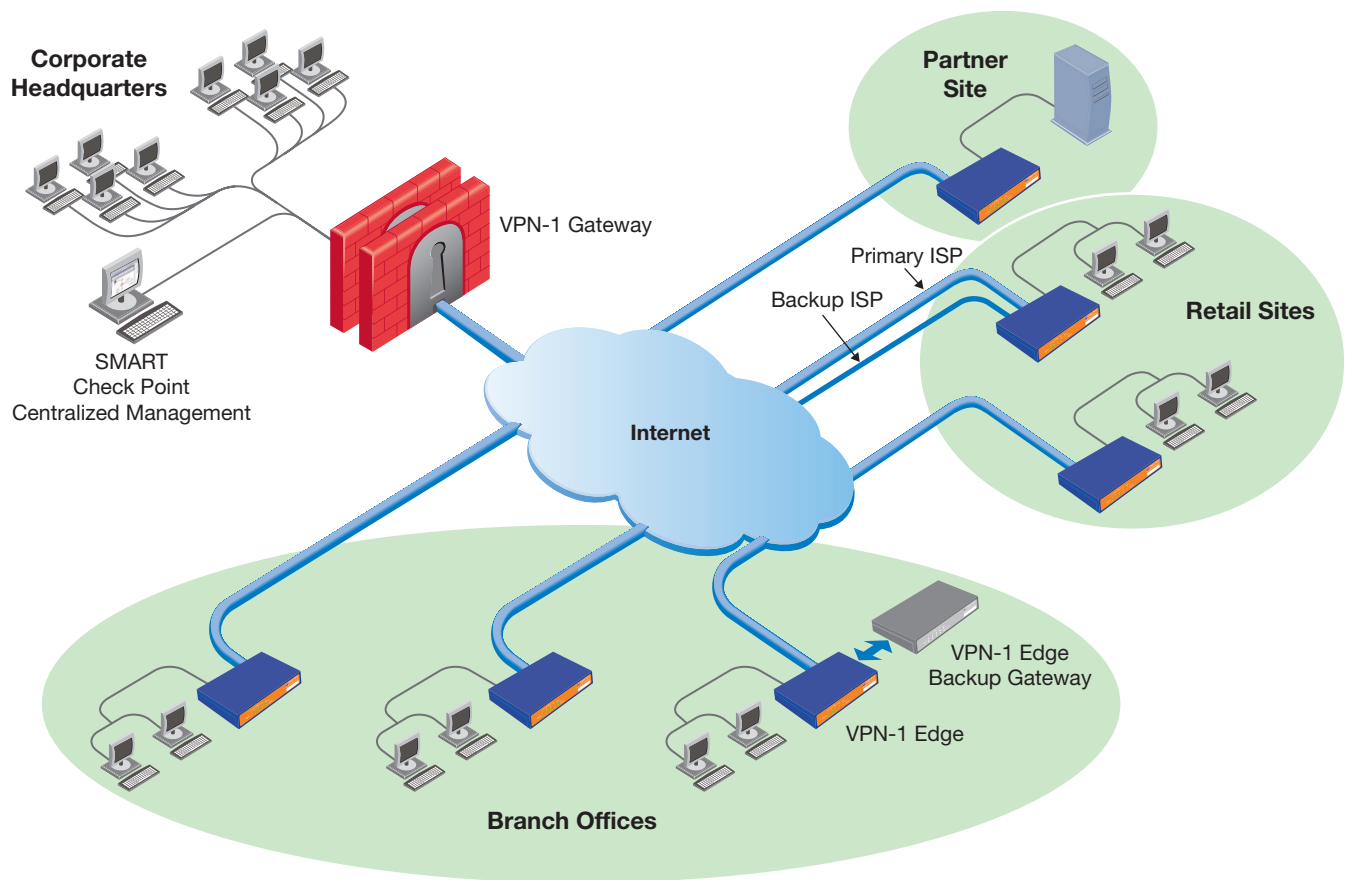
#### RAPID DEPLOYMENT & MANAGEMENT

VPN-1 Edge appliances deploy in minutes and can be centrally managed along with other Check Point gateways through Check Point's centralized management, including SmartCenter Pro<sup>™</sup>, SmartCenter Enterprise, SmartCenter Express, SmartCenter Express Pro and Provider-1<sup>®</sup>. These management products (sold separately from VPN-1 Edge) allow you to centrally define, efficiently manage and constantly monitor multiple Check Point gateways from a single console. VPN-1 Edge provides secure connectivity for remote sites and large-scale deployments.

#### Plug and Play Appliance

VPN-1 Edge includes wizard-driven Web-based management for setup in minutes by non-technical staff at the remote site. To further ease large-scale deployments, Check Point can pre-configure VPN-1 Edge to your specifications, for truly "plug and play", secure connectivity.





VPN-1 Edge supports Check Point SMART centralized management for efficient large-scale VPN and firewall management.

### One-Click VPN Deployment

Check Point centralized management simplifies gateway setup through One-Click VPN Communities. With VPN Communities, you simply drag the icon representing a VPN-1 Edge appliance and drop it into a VPN community, in the same way you would drag and drop a file into a desktop folder. The VPN-1 Edge appliance automatically inherits community security parameters, receives a X.509 digital certificate from the Check Point Internal Certificate Authority (included with Check Point centralized management), and can immediately establish secure IPSec sessions with the rest of the VPN community.

### Efficient Large-scale Management

SmartCenter Pro includes Smart Large Scale Manager (SmartLSM) for quick provisioning and maintenance of hundreds of gateways. After using templates to define a SmartLSM profile, you can easily apply its security parameters and VPN/security policy to other VPN-1 Edge gateways. For very large deployments, the optional Security Management Portal (SMP) module provides profile-based management of thousands of gateways. With both SmartLSM and SMP, all gateways, even those with dynamically assigned IP addresses, automatically fetch the security policy from the management server.

### Always Up-to-date Security

For effective protection against evolving threats, security software must be kept up-to-date. Check Point SmartCenter Pro includes SmartUpdate that lets you centrally install and upgrade both security and operating system software. SmartUpdate can automatically distribute software updates, eliminating the time and cost associated with one-at-a-time device updates while ensuring consistent, current security across your network.

## SECURE CONNECTIVITY

VPN-1 Edge protects the privacy of data communications with strong encryption and authentication, and supports multiple network topologies to meet your business needs. VPN-1 Edge also features high-speed networking and non-stop connectivity.

### Strong Encryption and Authentication

VPN-1 Edge adheres to the IPSec standard, automatically negotiating the use of the strongest possible encryption and data authentication algorithms. VPN-1 Edge can encrypt data using AES, 3DES and DES algorithms, and provides strong authentication by supporting industry-standard X.509 digital certificates. To further ease deployment, VPN-1 Edge can use digital certificates provided by the Check Point Internal Certificate Authority included with Check Point centralized management.

### Multiple Topology Support

Some organizations prefer to deploy security in a hub-and-spoke topology, sending all traffic through a primary VPN gateway. VPN-1 Edge allows you to route all traffic, even Internet-bound traffic, through a central VPN-1 Pro gateway before being sent to its final destination. OPSEC-certified products such as anti-virus or URL filtering can inspect traffic at the central site, removing the need to deploy such functionality to each site. For organizations that prefer to send traffic directly to the Internet, VPN-1 Edge also supports split tunneling.

## High-speed Networking

VPN-1 Edge keeps costs down by permitting multiple employees to share a single Internet connection without the requirement for additional equipment. VPN-1 Edge provides plug and play connectivity with an integrated 4-port LAN switch. A built-in DHCP server assigns computers network addresses to connected machines, while Network Address Translation (NAT) and Port Address Translation (PAT) hide local network addresses from the public.

### Non-stop Connectivity

Keeping your network up and running is critical to your business. VPN-1 Edge supports a back-up ISP connection and automatic fail over across two VPN-1 Edge gateways to provide always-on protection.

## THE TECHNOLOGY INSIDE

VPN-1 Edge is based on VPN-1 Embedded NG™ technology that incorporates Check Point's market-leading firewall and VPN software optimized for embedded platforms. VPN-1 Embedded NG is developed by SofaWare Technologies, a Check Point company. SofaWare designs software for embedded-platforms and creates innovative service solutions based on the technology.

The screenshot shows the SmartLSM interface with two main sections:

**Gateways List - 505 Gateways**

Type	ID	Gateway Status	Policy Status	Policy	Last Known IP	Policy Fetch Time	Dynamic Objects	Operating System
Check Point ROBO	0.0.1.184	OK	OK	Policy_2.37	94.189.30.8	6:09:43 20-Jan-03	Web_Server=247...	Windows 2000
Check Point ROBO	0.0.1.185	OK	OK	Policy_2.37	77.78.121.120	6:09:45 20-Jan-03	Opsec_Server=2...	Windows NT
Check Point ROBO	0.0.1.187	OK	OK	Policy_2.15	109.44.80.4	6:09:47 20-Jan-03	Web_Server=222...	Linux
Check Point ROBO	0.0.1.188	OK	OK	Policy_3.01	69.116.245.38	6:09:49 20-Jan-03	Email_Server=21...	Windows 2000
Check Point ROBO	0.0.1.189	OK	OK	Policy_1.07	161.139.93.127	6:09:51 20-Jan-03	Email_Server=24...	SecurePlatform
Check Point ROBO	0.0.1.190	OK	OK	Policy_2.37	182.73.152.8	6:09:52 20-Jan-03	Email_Server=24...	Windows NT
Check Point ROBO	0.0.1.191	OK	OK	Policy_2.15	248.180.115.32	6:09:54 20-Jan-03	Manager=234.17...	Windows NT
Check Point ROBO	0.0.1.194	OK	OK	Policy_1.07	153.206.198.75	6:09:57 20-Jan-03	Email_Server=25...	Windows 2000
Check Point ROBO	0.0.1.196	OK	OK	Policy_2.37	243.135.230.12	6:09:59 20-Jan-03	Opsec_Server=2...	SecurePlatform
Check Point ROBO	0.0.1.197	OK	OK	Policy_2.15	236.62.2.80	6:10:01 20-Jan-03	Opsec_Server=2...	Linux
Check Point ROBO	0.0.1.200	OK	OK	Policy_2.15	7.24.4.75	6:10:04 20-Jan-03	Manager=232.10...	Windows 2000
Check Point ROBO	0.0.1.201	OK	OK	Policy_3.01	11.224.97.57	6:10:06 20-Jan-03	Opsec_Server=2...	Windows 2000
Check Point ROBO	0.0.1.202	OK	OK	Policy_3.01	94.192.164.244	6:10:08 20-Jan-03	Opsec_Server=2...	SecurePlatform
Check Point ROBO	0.0.1.203	OK	OK	Policy_3.01	136.166.121.131	6:10:09 20-Jan-03	Manager=221.11...	Windows 2000
Check Point ROBO	0.0.1.207	OK	Not Installed	Policy_1.07	16.175.190.175	6:10:13 20-Jan-03	Opsec_Server=2...	Windows NT
Check Point ROBO	0.0.1.208	OK	OK	Policy_2.15	107.169.100.115	6:10:15 20-Jan-03	Web_Server=244...	SecurePlatform

**Status View - Critical Notifications - 6 Gateways**

Name	Updated	Gateway Status	Policy Status
ROBO_0005	6:04:05 20-Jan-03	OK	Not Updated
ROBO_0186	6:05:46 20-Jan-03	OK	Not Installed
ROBO_0266	6:06:49 20-Jan-03	OK	Not Installed
ROBO_0462	6:10:14 20-Jan-03	OK	Not Installed

SmartCenter Pro includes SmartLSM for efficient deployment and management of hundreds of VPN-1 Edge gateways.

VPN-1 EDGE APPLIANCE SPECIFICATIONS	S8	X16	X32	XU
<b>Size</b>				
Total users	8	16	32	Not limited by license
<b>Interfaces</b>				
4-port 10/100 LAN switch	✓	✓	✓	✓
10/100 WAN port	✓	✓	✓	✓
10/100 DMZ/WAN2 port	-	✓	✓	✓
Serial port	-	✓	✓	✓
<b>Firewall</b>				
Performance	22 Mbps	80 Mbps	80 Mbps	150 Mbps
Concurrent connections	2000	8000	8000	8000
Stateful Inspection firewall	✓	✓	✓	✓
DoS protection	✓	✓	✓	✓
Anti-spoofing	✓	✓	✓	✓
<b>VPN</b>				
Performance (3DES)	3 Mbps	20 Mbps	20 Mbps	30 Mbps
Site-to-site IPSec VPN gateway	-	✓	✓	✓
Remote access IPSec VPN client	✓	✓	✓	✓
Remote access VPN gateway	1 user	10 users	15 users	25 users
VPN-1 SecuRemote client licenses	Included	Included	Included	Included
AES, 3DES, DES encryption	✓	✓	✓	✓
IPSec NAT traversal	✓	✓	✓	✓
Hardware random number generator	-	✓	✓	✓
<b>Networking</b>				
WAN access protocols	Static IP, DHCP, PPPoE, PPTP, Telstra			
Static NAT	-	✓	✓	✓
Hide NAT	✓	✓	✓	✓
DHCP server	✓	✓	✓	✓
Dynamic routing*	-	✓	✓	✓
VLAN support*	-	✓	✓	✓
<b>High Availability</b>				
Gateway high availability-ready	-	✓	✓	✓
Supports back up VPN gateway at another site (MEP)	-	✓	✓	✓
Supports back up ISP	-	✓	✓	✓
Supports dial back up (modem required)*	-	✓	✓	✓
<b>VPN User and Gateway Authentication</b>				
Site-to-site	-	Check Point Internal Certification Authority (Diffie-Hellman 1024-bit PKI) digital certificates, X.509 digital certificates or pre-shared secret		
Remote access (to VPN-1 Pro)	RADIUS, RSA (SecureID), LDAP, MS ActiveDirectory, TACACS, XAUTH			
Remote access (to VPN-1 Edge)	RADIUS* or pre-shared secret			
<b>Centralized Management Support</b>				
Management software	SmartCenter, SmartCenter Pro/SmartLSM, SmartCenter Express, SmartCenter Express Pro, Provider-1, SMP			
Software updates	SmartUpdate			
Reporting and monitoring	SmartView Tracker, SmartView Reporter*, Syslog			
<b>Local Web-based Management</b>				
Installation wizard	✓	✓	✓	✓
Firewall wizard	✓	✓	✓	✓
VPN wizard	✓	✓	✓	✓
Local logs	✓	✓	✓	✓
HTTPS remote access	✓	✓	✓	✓
<b>Other Hardware Specifications</b>				
Dimensions	1.2 x 8 x 4.8 inches (3.0 x 20.3 x 12.2 cm)			
Weight	1.8 lbs (.82 kg)			
Power	100-240 VAC, 50-60 Hz			
Regulatory compliance	FCC Part 15 Class B, CE			

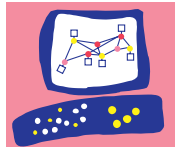
\*Available Q1 2004. For information on the latest features updates, please visit us at [http://www.checkpoint.com/products/connect/vpn-1\\_edge\\_chart.html](http://www.checkpoint.com/products/connect/vpn-1_edge_chart.html).

Check Point Warranty: VPN-1 Edge includes a 1-year hardware warranty.

VPN-1 Edge is developed by SofaWare Technologies, a Check Point company focused on building embedded platforms and innovative service solutions based on Check Point VPN-1 Embedded NG™ technology.



**Check Point**  
SOFTWARE TECHNOLOGIES LTD.



We Secure the Internet.

© 2004 Check Point Software Technologies Ltd. All rights reserved.

Check Point, Check Point Express, the Check Point logo, ClusterXL, ConnectControl, Firewall-1, Firewall-1 GX, Firewall-1 SecureServer, Firewall-1 VSX, Firewall-1 XL, FloodGate-1, INSPECT, INSPECT XL, IQ Engine, Open Security Extension, OPSEC, Provider-1, Safe@Office, SecureKnowledge, SecurePlatform, SecureXL, SiteManager-1, SmartCenter, SmartCenter Pro, SmartDashboard, SmartDefense, SmartLSM, SmartMap, SmartUpdate, SmartView, SmartView Monitor, SmartView Reporter, SmartView Status, SmartViewTracker, SVN, UAM, User-to-Address Mapping, UserAuthority, VPN-1, VPN-1 Accelerator Card, VPN-1 Edge, VPN-1 Pro, VPN-1 SecureClient, VPN-1 SecuRemote, VPN-1 SecureServer, and VPN-1 VSX are trademarks or registered trademarks of Check Point Software Technologies Ltd. or its affiliates. All other product names mentioned herein are trademarks or registered trademarks of their respective owners. The products described in this document are protected by U.S. Patent No. 5,606,668 and 5,835,726 and may be protected by other U.S. Patents, foreign patents, or pending applications.

P/N 000000